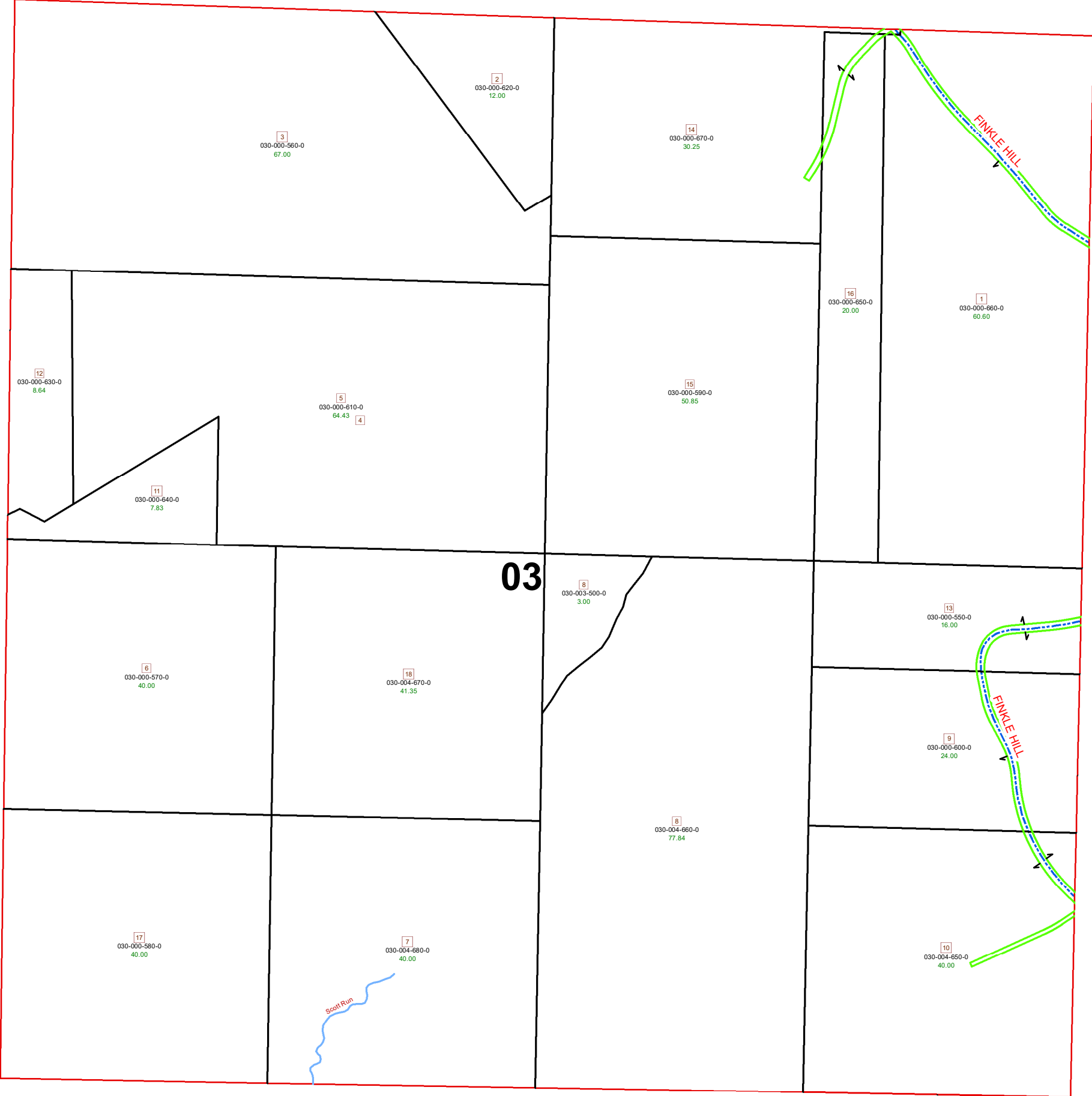


CENTER TOWNSHIP SECTION 3 R10- TWP 6 MORGAN COUNTY, OH

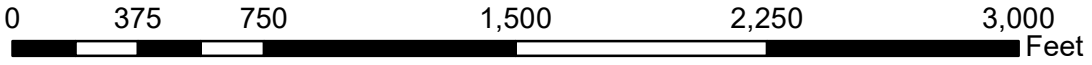


PIN	VOL	PAGE	Owner	LegalDescr	Acres
030-004-650-0	OR230	1	CNX LAND LLC	R10 T06 S03 SD 10	40
030-004-680-0	OR230	1	CNX LAND LLC	R10 T06 S03 SD 07	40
030-000-580-0	OR230	1	CNX LAND LLC	R10 T06 S03 SD 17	40
030-000-600-0	OR230	1	CNX LAND LLC	R10 T06 S03 SD 9 P	24
030-000-550-0	OR230	1	CNX LAND LLC	R10 T06 S03 SD 13 P	16
030-004-660-0	OR230	1	CNX LAND LLC	R10 T06 S03 SD 08 E	77.84
030-004-670-0	OR230	1	CNX LAND LLC	R10 T06 S03 SD 18	41.35
030-000-570-0	OR230	1	CNX LAND LLC	R10 T06 S03 SD 6 M	40
030-000-640-0	OR230	1	CNX LAND LLC	R10 T06 S03 SD 11	7.83
030-000-610-0	OR230	1	CNX LAND LLC	R10 T06 S03 SD 4-5	64.43
030-000-660-0	OR230	1	CNX LAND LLC	R10 T06 S03 SD 1 P	60.6
030-000-620-0	OR230	1	CNX LAND LLC	R10 T06 S03 SD 2 M	12
030-000-560-0	OR230	1	CNX LAND LLC	R10 T06 S03 SD 3 M	67
030-000-630-0	OR230	1	CNX LAND LLC	R10 T06 S03 SD 12	8.64
030-000-590-0	OR230	1	CONSOLE MINING COMPANY L	R10 T06 S03 SD 15 F	50.85
030-000-650-0	OR230	1	CONSOLE MINING COMPANY L	R10 T06 S03 SD 16	20
030-000-670-0	OR230	1	CONSOLE MINING COMPANY L	R10 T06 S03 SD 14 E	30.25
030-003-500-0	OR222	331	STINE MARK S & DONNA JO	R10 T06 S03 SD 8 N	3

Boundaries

Type

- Lot
- Parcel
- Roads
- Hidden
- ROW
- Hydro
- Sections



Source: Morgan County Engineer's Office
 Author: Marcia Wolfe
 Date: 3/2/2020

Disclaimer: The information that these maps contains is or reference purposes only. Please bring any erros to the attention of the Engineer's Office staff.
 Thank you